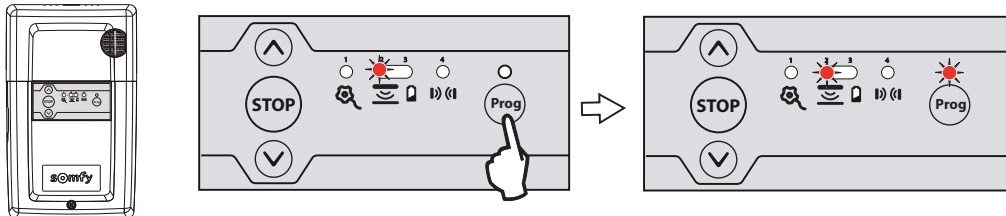
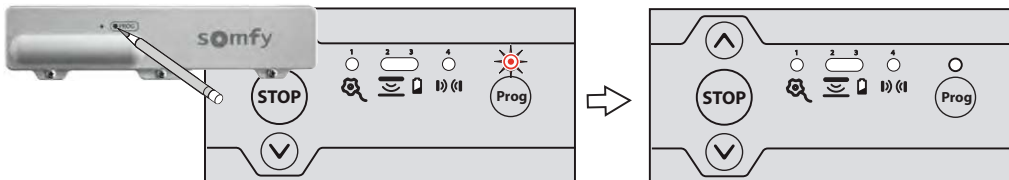


Pairing the safety edge transmitter

- 1 Bring the door and the bottom rail to a workable eye level. Press and hold the 'Prog' button on the Rollixo panel until the LED light above it comes on – Then let go!



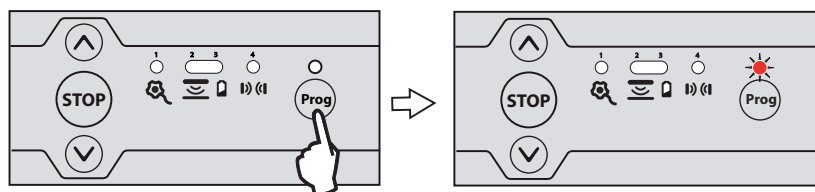
- 2 Now approach the Transmitter on the Bottom Rail – Using a small tool press the 'Prog' button on the unit until the Rollixo panel 'Prog' LED flashes, then let go (this could be up to 5 seconds) the 2 units are now active.



- 3 Check the operation of the door by pressing the Rollixo Up & Down control buttons.
- 4 Check that the safety edge works by activating the edge.

Pairing Keygo RTS keyfob's

- 1 Press the 'Prog' button on the Rollixo RTS front panel until the LED above the Prog button lights up RED.



- 2 Press the button on the Keygo RTS keyfob that you want to control the Rollixo RTS controller with until the 'Prog' LED on the Rollixo RTS controller flashes and then goes out.

